

THE MIDDLE GAME

Volume 1, Issue 10

May 2004

MCCU AGM 2004

This is due to be held on Sunday 20th June. The venue was due to be Birmingham University, but this is not now possible. County delegates will receive details of where the meeting will be held with their official notification.

If you are a delegate please try to attend. If not please ensure that your delegate knows your views concerning any motions for discussion. As I haven't been able to give details of these in this newsletter I will be asking that they appear on the MCCU Website, and will let those on the email alert system know when they have been posted.

BCF FINANCE COUNCIL MEETING

Saturday 24th April 2004 at Gloucestershire's county cricket ground in Bristol.

Before the meeting began, Council stood for a minute in silence in memory of Richard Furness who had died on the 15th April. Richard was a Senior Arbiter and FIDE Arbiter and a former BCF Junior Director, and had long been a tireless organiser and servant of chess at levels local, national and international.

Gerry Walsh was in the chair, with just over 30 present. Numbers attending may have suffered due to rail engineering work causing transport difficulties.

Many felt that a number of the financial issues on the agenda were so interlinked that there was no obvious natural order in which they should be taken. The old "chicken and egg" conundrum seemed to apply.

On a proposal of the Management Board Council elected Alan Martin of the London Chess League and (posthumously) Richard Furness **Honorary Life Vice-Presidents**.

Robert Richmond presented his detailed Financial Report. He had forecast a deficit for the year of about £8000, but on more recent information he thought £9000 to £10,000 would be nearer the mark. Rather than speak to the Report at length he invited questions. A notable one queried whether

Continued on page 2 col 2

INSIDE THIS ISSUE

- 2** Game Fee or Mandatory Membership?
- 5** BCF County U18 Team report
- 5** Forthcoming Events
- 6** Positional problems
- 7** Event Results
- 12** The History of Chess Notation
- 13** Chess Champions - Steinitz
- 17** Worcs v Essex U125 match report
- 18** BCF County results supplement
- 20** BCF County Semi-final draw

GAME FEE OR MANDATORY MEMBERSHIP?

Some of you will already be aware that the basic method of obtaining a significant part of the BCF's income is again under the spotlight, and of some of the arguments and counter-arguments that have been put forward. This article is an attempt to summarize matters.

How the BCF should obtain income from chess players has been the subject of discussion for some time. John Philpott, when covering for the absence of a Finance Director, set out the situation which was reported in The Middle Game Issue 4. Essentially the choice presented was, and still is, whether Game Fee, Membership Fee or a combination of the 2 is preferable.

As already reported a proposal to introduce a "universal" membership fee, should have been discussed at the recent BCF meeting, but was not. The proposals were as follows:-

It will be proposed on behalf of the Management Board: "that this Council recommend that a mandatory Membership Scheme based on grading be introduced to commence on 1st September 2005. Council instructs the Board to produce detailed proposals for submission to the next AGM/Council meeting in October"

The following amendments will be proposed by the Northern Counties Chess Union and by the Durham County Chess Association:

(a) to replace "grading" with "withholding from publication the grades of non-members"

(b) to replace "1 September 2005" with "1 May 2005"

(c) to add at the end: "Council directs the Board to postulate first, that the minimum membership fee will be £8, second, that it replace the Game Fee Scheme entirely"

The original proposal from the North appears to

Continued page 3 col 1

The Game Fee projection was right, considering that previous Finance Directors have invariably overestimated?" The Finance Director replied that he was uncomfortably aware of this, but had used what seemed to him to be reliable methods.

The Report led to talk of venues and their cost. Venues in the centre of large towns are expensive. The Bristol venue at £250 was very much at the lower end of the scale, but it was not exactly the easiest place to get to. The norm in to rotate venues around the Unions. Some questioned whether this was still appropriate. It was decided, by a small majority, to drop the rotation and use central venues. This was referred to the Management Board.

The Finance Director suggested a break even budget. He offered Council three ways of cutting costs. Taking up any of them would allow him to reduce his recommendation for Game Fee 2004-5. (a) Olympiad(s). Remove the £3000 allowance for fees to players. The majority vote did not favour this.

(b) Grand Prix. Remove the £5000 allowance for a BCF Grand Prix when the present one ends in August. A similar majority voted no.

(c) Publication of Grading List. We could save £1300 by not putting the list on the BCF website (a new departure recommended by the MB). This doesn't mean what it sounds like. Putting the list on the site would cost nothing. The £1300 is estimated loss of net income from the sale of printed lists. No again and let's go online, with some comfort (85-34), but only after determined efforts to refer it to the October meeting which happens three months after the list appears. It was remarked, but not by the determined, that we are the only sensible body left that doesn't yet publish its grades on the internet.

Council, having rejected three economies, suggested and approved two others. It halved the BCF Schools Championship budget from £6000 to £3000 and instructed the Home Director to budget for a surplus on the National Club. (The original provision had been for a loss of £2000.) It

Continued on page 4 col 1

envisage that Membership would replace Game Fee entirely, and the current categories of Standard and Junior Member would be abolished. Grading would be accepted from any source, and the grades of non-Members would be calculated, but published as "****". The new sort of Member would receive a free emailed version of *ChessMoves* and would be entitled to play in the BCF Championship and any other Federation event.

The suggestion has been made that a universal membership scheme would mean that players would identify more closely with the BCF and that a number of other broadly similar organisations operate mandatory membership schemes e.g. Bridge. The counter arguments are that chess players already identify with the BCF, or have little desire to do so, their only interest being to play chess in their local league.

Game fee has been described in some quarters, particularly those supporting the mandatory membership proposal, as a stealth tax, presumably because it has increased over the years. However, the question has been posed of whether such a view means that the same people would propose that the membership fee, once set, would never increase. If so, how is the BCF to cope with inflation? If membership fees are to increase over the years, is this any less a stealth tax than increasing game fee?

The majority of chess players were persuaded to accept the introduction of the Game Fee system a few years ago. The principal argument then was that "the more you play, the more you pay" was a more equitable approach. Various leagues and congresses operate outside the game fee system, their games are not part of the official gradings system and they do not contribute financially to the BCF. Prior to Game Fee, counties paid a "levy" based on the level of chess activity in their area, the measurement of activity seems to have somewhat "broad brush".

It has been pointed out that if game fee is

completely replaced by membership, a player playing 10 games will still pay the same amount as another playing 100 games (and yes there are players who clock up over 100 games per year). Some do not feel that such a complete departure from the "pay linked to play" principle is fair. Others argue that in fact most players do not actually pay directly in relation to the number of games they play. Most leagues set their team fees to cover the game fee they anticipate, a player playing in 2 teams for their club may well pay no more towards the team fees than a club colleague playing in just 1 team.

A number of parties claim that an £8 membership fee would raise more income than the current game fee system and this is their basis for suggesting that it replace game fee entirely.

12,500 members @ £8 = £100,000 income

Others have questioned the calculations and do not feel that all the relevant factors have been taken into account.

An analysis of the current grading masterfile (this covers all players who have played any games in the last 3 years) shows that there are 11404 players on the list who played at least 5 standard play games or 5 at least rapidplay games last season (i.e. players who would have a published grading).

One set of figures based on the above using the round figure of 11,400 has been produced on the basis of £10 membership fee. This has been worked on a 75% take up, which is based on experiences found with similar schemes elsewhere. This would produce a gross income of £85,500. However, there will be costs in administering the scheme. If Counties and other bodies collect the fees on behalf of the BCF, it would be realistic for them to receive a commission (say 10%), there would also be costs within the BCF office (say 75p per member) and 17.5% of the membership fee would be payable as VAT. This brings the net income down to roughly £59,000.

The current projected net income from Game Fee

Continued on page 5 col 2

See next col

rejected one suggestion to abolish the Open section and another to abolish the National Club competition altogether.

It was proposed that Direct Members fees go up by amounts in the region of 20% (10% last year) as laid out in the Director's papers. This was agreed, though not without counter-proposals wanting more. Whilst the Finance director did not propose any change to other members fees e.g. "non-territorial affiliates" such as Braille CA, & NYCA. Council voted narrowly in favour of a 25% increase.

The Finance Director originally recommended an increase in Game fee to 47p (currently 36p) assuming no economies. In the event, he felt able to reduce his figure to 45p. After much discussion of the merits and fairness of Game Fee, voting was on the basis of what game fee are you in favour of, rather than a vote for or against a particular figure. The median value being the "winner". Votes ranged from 1 for £1.50 to 4 for a reduction to 34p. The median vote being 44p, this will therefore be the Game fee from 1st September 2004.

The rates for Rapid and Club Internal are automatically one-half and one-third of these figures unless Council decides otherwise. Their decision was that Rapid and Club Internal are one-half and one-third, but rounded to the nearest penny.

Junior Game Fee as such does not currently exist. Exclusively-junior events are exempt. The Management Board proposed removing this exemption and charging at half the regular rate. This provoked strong opposition from some quarters. An amendment to apply it to Standard play only was rejected. (Standard play represents perhaps one-fifth of junior games currently graded). The unamended proposal was agreed. The idea is that income will be ring-fenced for junior activities. (The beleaguered BCF Schools Championship had been mentioned.) However, the likely value of this income was unquantified.

See next col

Direct-Members currently have exemption from Game Fee at congresses. The Management Board proposed abolishing the exemption. There was no discussion, and the question was deferred.

The Director of Home Chess proposed some changes to the County Championship rules; unfortunately a combination of illness & the railway engineering work prevented him from being at the meeting to explain them in more detail.

(a) Rule 16. That in the event of a QPF claim under Appendix D (no arbiter present), there should be a right of appeal. This is counter to FIDE rules which do not allow for appeal. Council agreed this subject to approval by the Chief Arbiter.

(b) Rule 13. Two amendments were suggested regarding the tie-break rules. Firstly, that board count - but not elimination - shall disregard any defaulted boards. Bracketed words on the Agenda left the meeting unclear as to the precise meaning. Some that if you disregard defaults you are likely to end up with a match in which one side has fewer wins than the other. This would certainly improve the board-count score of the side with fewer defaults(!), but the effect is less fortunate if defaults are one each, and one is on top board and the other on bottom board. Council felt that the intention was unclear and resolved to take no decision on the proposal. It thus never got as far as the second part, which was that if all games are drawn the winner is the side that had black on odd. The probability of this happening over 16 boards is rather small, but one sees the point.

The Director has said, since the meeting, that he intends a different proposal for the October meeting. Namely, that "if scores are level, then the first tie-break is the number of boards defaulted".

The NCCU and Durham CCA had originally proposed that the Management Board put detailed

Continued on page 5 col 1

Continued from page 4

plans to Council, at its October meeting, for "a mandatory Membership Scheme" related to the publication of grades, to be introduced 1st May 2005. It appeared on the Agenda as a proposal of the Management Board with NCCU amendments, with an effective date of 1st September 2005. However the item was reached only 5 mins before the 6.30pm finish time. Council was unwilling to vote without discussion.

An Extraordinary Council Meeting is being set up at the end of June to discuss this issue.

BCF COUNTY U18 FINALS

Last year, the ladies event was held at St Peter & Paul Syston, Leicester. It was so successful that it was decided to hold both events there this year. After very late withdrawals, the event settled down to 6 teams in the Open and 3 in the girls section.

The event was opened by Ms Fiona Buchan, headmistress of the school, who welcomed the players. The Chief Controller was John Robinson from Corby.

After Round one of the Open, the scores were Warwicks 10, Lancs 9½, Lincolnshire 5½, Leicester and Manchester both on 5 and Derby on 1.

The exciting second round saw team managers checking and re checking board counts. After the very last game to finish, with seconds on the clock, Lancashire has scored 21, Warwicks 20½, Manchester 12½, Lincolnshire 9, Leicestershire 8 and Derbyshire 1. The last three teams did exceptionally well. Lincolnshire had the distinction of being organised by one of the players, Michael Jones. Leicestershire were the youngest team, and Derbyshire make their return after an absence of 20 years.

The girls saw two strong teams, Surrey and Wilts battle each other and a very young Leicestershire team gain much experience. Surrey scored a total of 11 points, and Wiltshire 7 to gain the two titles on offer.

The prizes were presented by Roy Heppinstall, the BCF C.E.O. and Cyril Johnson, the Director of Home Chess who deputised for Peter Turner.

Continued from page 3 col 2

and the existing membership schemes are around £61,000.

There are those who would argue that unless the membership scheme would bring in significantly more than game fee, what is the point in creating such an upheaval? There are those who go a stage further and suggest that even a 75% take up on 11,400 is optimistic, putting the BCF in danger of getting significantly less income than that from game fee.

A further suggestion is that the game fee is retained, and a better voluntary membership scheme is operated i.e. one where the fee paid is not mainly swallowed up by benefits returned to members leaving a very small profit (the position with the current schemes). This would in theory create less upheaval and would carry less financial risk to the BCF.

If you have any definite views on the subject please ensure these are at least passed on to your BCF delegate. There may also be an argument, for ensuring your county or other representative body is properly mandated on how to vote.

FORTHCOMING EVENTS

6 Jun - [Leek Rapidplay](#), St Edward's Middle School, Westwood Road, Leek, Staffordshire. Robert Milner, 411 Cheadle Rd, Cheddleton, Leek, Staffordshire ST13 7BH (Tel: 01782 550112)

11-13 Jun - [MCCU Open](#), Hinckley. John Robinson, 7 Manor Road, Stanion, Kettering, Northants NN14 1DL (Tel: 01536 261697, Email:

robinson@chessstanion.ndo.co.uk)

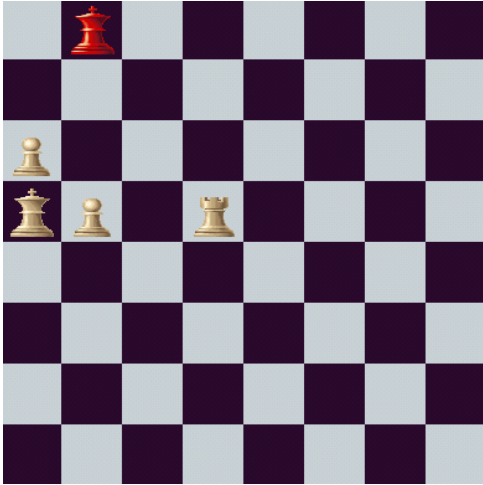
9-11 Jul - [Manchester Summer Congress](#), Allen Hall, Manchester.

Harry Lamb, 134 Junction Road, Deane, Bolton BL3 4NQ (Tel: 01204 63374, Email:

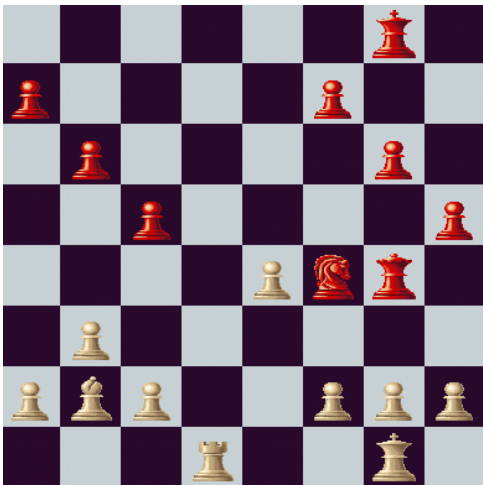
gmccacongress@yahoo.co.uk)

POSITIONAL PROBLEMS

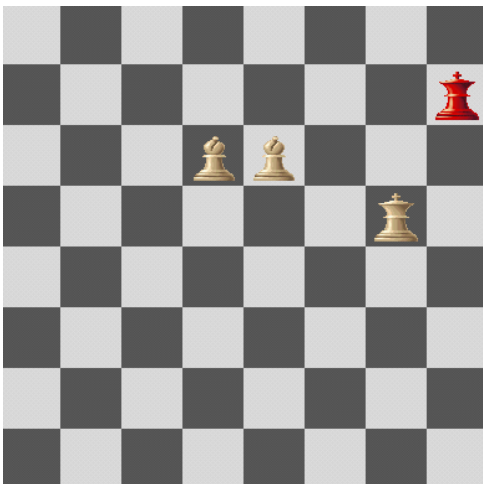
No. 1 White to play and win in 3 moves.



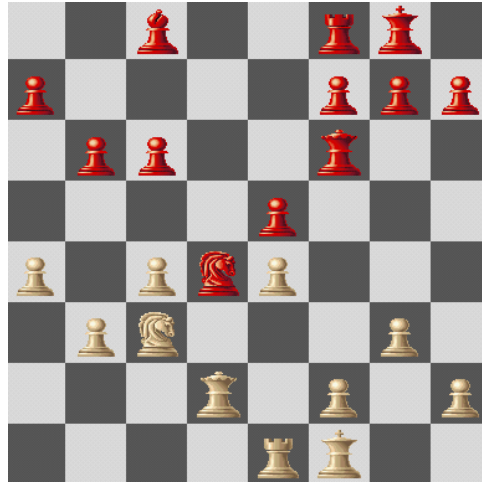
No. 2 White to play and win in 2 moves.



No. 3 White to play and win in 5 moves.



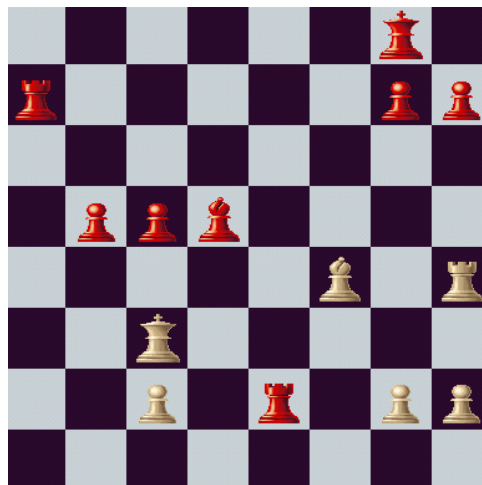
No. 4 Black to play and win in 3 moves.



No. 5 White to play and win in 3 moves.



No. 6 Black to play and win in 7 moves.



for solutions see page 17

EVENT RESULTS

29th Nottingham Congress, 23 – 25 April 2004

The 29th Nottingham Congress was held for the first time ever at a superb new venue, the Pitchside Diner at Nottingham Forest F C. Despite one or two minor problems the playing area met with the approval of the vast majority of competitors and it is hoped to retain the venue for next year's event.

In spite of this being the third venue in three years, numbers increased slightly from last year with a final total of 147 entrants.

In the **OPEN** section (22 competitors) the event was dominated once again by the only competing grandmaster this year, Mark Hebden (Birstall) who had a grading advantage of 60 points over his nearest competitor and was untroubled in winning the event with a perfect 6/6. Two players shared second on 4.5/6 – Peter Mercs (Gambit) and Jeremy Fraser-Mitchell (St Albans).

The **MAJOR** section, for players graded below 160 (53 competitors) in contrast was a very hard-fought affair, and eventually 3 players, Alan Rogerson (Solihull) Peter Szalapaj (Ecclesall) and Ankush Khandelwal shared first with 5/6. The section's grading prize was won by local junior Daniel Wells of Newark. Mr Rogerson is also the first winner of a new trophy kindly donated by Age Concern (Nottingham and Notts) for the best tournament score by a senior player.

The **MINOR** section, for players graded below 120 (72 competitors) was dominated by one competitor, Richard Stokes (Peterborough) who, having scored a perfect 5/5 to start, managed a hard-fought draw in the last round to secure first place. Two local players, James Thomson (Stapleford) and Gary Hopkinson (Gambit) shared second with 5/6 and will also share the Wilf Crossland Memorial Shield for the best

Minor Performance by a Nottinghamshire player.

The tournament again ran smoothly and to time, for which huge thanks are due to the team of controllers and assistants. Thanks also to the staff at Nottingham Forest F C for their unfailing help and courtesy during the event.

The dates for next year's event are yet to be decided but it is hoped they will correspond with this year's as closely as possible. Every effort will be made to retain the current venue.

GEOFF GIBSON
ORGANISER

OPEN

Mark Hebden Birstall 1st 6/6 £300.00

Peter Mercs Gambit 4.5/6 2nd= £125.00

Jeremy Fraser-Mitchell 4.5/6 2nd= £125.00

Tristan Cox Sutton Coldfield 4/6 U165 Grd (Free Entry Voucher)

MAJOR

Alan Rogerson Solihull 5/6 1st= £120.00 (*)

Peter Szalapaj Ecclesall 5/6 1st= £120.00

Ankush Khandelwal Stapleford 5/6 1st= £120.00

Daniel Wells Newark 3.5/6 U130 Grd (free Entry Voucher)

(*) Also wins Age Concern (Nottingham & Notts) trophy for best tournament performance by a senior player.

MINOR

Richard Stokes Peterborough 5.5/6 1st £200.00

James L Thomson Stapleford 5/6 2nd= £80.00 (*)

Gary Hopkinson Gambit 5/6 2nd= £80.00 (*)

M Chinaris Sheffield University 3.5/6 Best U/G (Free Entry Voucher)

Continued on next page

Continued from previous page

WALSALL KIPPING RAPIDPLAY SATURDAY 8TH MAY 2004

The fourteenth rapidplay congress organised by the Walsall Kipping Chess Club took place at the Walsall campus of Wolverhampton University on Saturday 8th May 2004.

The open section was won by English grandmaster Mark Hebden from the East Midlands, second place went to Lawrence Cooper, international master from Stafford. In equal third place were Martin Burrows from Leicester, Tony Hynes from Birmingham and Nick Rutter from Newport Shropshire.

Full results from the congress are as follows:

Open Section

1 st	Mark Hebden	Leicester	5½ /6
2 nd	Lawrence Cooper	Stafford	4½ /6
3 rd	Martin Burrows	Leicester	3½ /6
=	Tony Hynes	Birmingham	
	Nick Rutter	Newport Shropshire	

Best under 18 Tom Pym Shropshire 2½ /6

Major Section

1 st	Matthew Tapp	Solihull	5½ /6
2 nd	Geoff Thomas	Stourbridge	4½ /6
3 rd	R Burton	Kynoch	4/6
grading prize	Mike Connor	Bolton	3/6
best u18	Ankush Khandelwal	Nottingham	3/6

Minor Section

=1 st	Alan Ruffle	Birmingham	5½ /6
	Lincoln White	Kynoch	
=2 nd	Kevin Barnett	West Bromwich	
	John Sawiak	Corby	5/6
Grading prize	Syd Allen	Rushall	
Best u18	Louis Graham	Shrewsbury	3½ /6

BCF Centenary Celebration – 3 League Match Close Results with Chess the Winner...

A unique chess match was played in on 21st April between the three local leagues - the Birmingham & District Chess League, the Coventry & District Chess League and the Leamington & District Chess League.

This event was held to celebrate the Centenary of the British Chess Federation and to raise the profile of chess in the Midlands.

Local pride was at stake and the result could not have been much closer. The Coventry and Leamington leagues tied on 10½ points each with Birmingham only just behind on 9.

This was the first time that all three leagues had got together in this way. 60 local players were involved from 21 different clubs with playing strengths ranging from near beginner to County level. Apart from balancing this range of playing strengths, there were no other criteria set for selection. Looking across the room in which the match was played it was however evident that people who enjoy chess come from either sex, all ages and all backgrounds.

Nearly every town in the region has an active chess club which will welcome new players or players returning to the game. Many clubs have junior sections. The contacts below will be happy to help find a suitable club in the appropriate area for anyone interested.

Contacts:

Birmingham: Dave Thomas

d.r.thomas@talk21.com

Coventry: Colin Green colin@g@clara.co.uk
02476 372587

Leamington/Stratford: Jonathan Rashleigh
jon@jrashleigh.freemove.co.uk 01926 842523

DETAILED RESULTS ARE ON THE NEXT PAGE

INTER-LEAGUE MATCH (LEAMINGTON v BIRMINGHAM v COVENTRY)

Played to celebrate the B.C.F. Centenary at Peugeot, Coventry on 21st April 2004

INDIVIDUAL SCORES

L = Leamington

B = Birmingham

C = Coventry

BOARD	CODE	NAME	SCORE	CODE	NAME
1	L1	P. HOLT	½ - ½	B1	K. INGRAM
2	B2	M. SMYTH	0 - 1	C1	C. GREEN
3	C2	E. GOODWIN	½ - ½	L2	C. SEARLE
4	L3	S. BURNELL	1 - 0	C3	R. HOLMES
5	C4	M. PAGE	½ - ½	B3	D. THOMAS
6	B4	G. CHRISTIE	0 - 1	L4	D. CHESHIRE
7	L5	A. PRICE	0 - 1	B5	G. HOPE
8	B6	K. THOMAS	1 - 0	C5	M. MOLAZADEH
9	C6	R. GREATOREX	0 - 1	L6	R. McNALLY
10	L7	A. GUNDRY	½ - ½	C7	D. IRELAND
11	C8	K. FORMAN	1 - 0	B7	F. JIMENEZ
12	B8	M. BIDDLE	½ - ½	L8	D. SHURROCK
13	L9	P. MILLS	½ - ½	B9	S. WILSON
14	B10	K. GILBERT	½ - ½	C9	M. JOHNSON
15	C10	J. DIXON	½ - ½	L10	M. TARLOW
16	L11	P. DRURY	0 - 1	C11	J. STEWART
17	C12	N.MALKA	1 - 0	B11	J. ASBURY
18	B12	L. RAWSON	0 - 1	L12	A. CHOWNE
19	L13	D. HORSLEY	1 - 0	B13	W. RAWLINGS
20	B14	P. BULL	0 - 1	C13	P. McCONNELL
21	C14	D. SABINO	1 - 0	L14	J. RASHLEIGH
22	L15	S. RUMSBY	1 - 0	C15	J. RAYNER
23	C16	P. DAVIES	0 - 1	B15	A. DRAPER
24	B16	L. WILMOTT	0 - 1	L16	R. STEVENS
25	L17	B. NASH	½ - ½	B17	P. WOODWARD
26	B18	D. ROWE	1 - 0	C17	R. HALE
27	C18	M. EMERY	1 - 0	L18	D. HENRY
28	L19	D. RANDALL	0 - 1	C19	L. GINTON
29	C20	I. WINNEY	0 - 1	B19	J. PAKENHAM
30	B20	J. FAHY	1 - 0	L20	D. GOGGIN

FINAL TEAM SCORES

	1	2	3	4	5	6	7	8	9	10	11	12	13	14	15	16	17	18	19	20	TOTAL
LEAMINGTON	½	½	1	1	0	1	½	½	½	½	0	1	1	0	1	1	½	0	0	0	10 ½
BIRMINGHAM	½	0	½	0	1	1	0	½	½	½	0	0	0	0	1	0	½	1	1	1	9
COVENTRY	1	½	0	½	0	0	½	1	½	½	1	1	1	1	0	0	0	1	1	0	10 ½

Colin Green

COVENTRY INTERNATIONAL EVENT

Background

A FIDE rated event, based on the Accelerated Swiss pairing system. This format was chosen to maximise opportunities for juniors and local club players to obtain international ratings, without having to take time off from their studies or work.

Tournament Director Mark Hogarth writes:

The Lord Mayor of Coventry, Councillor Sucha Singh Bains performed the official opening ceremony. Speeches were made by Tournament Director Mark Hogarth (returning to his native city), FIDE Arbiter Stewart Reuben, IM Chris Baker (a former student of King Henry VIII School), and the Deputy Headmaster.

One minute's silence was observed in honour of Richard Furness, a much loved FIDE Arbiter and friend to all, who had passed away peacefully in his sleep in the early hours of Thursday morning, following a lengthy illness. A monumental loss to British Chess. I shall certainly miss him. He gave me both inspiration and practical help in staging this pioneering tournament.

With a rush of late entries we achieved a total of 100 participants from 11 countries, including 3 Grand Masters and 6 International Masters. This, for a tournament that was a figment of my imagination less than two months ago...

PRIZE WINNERS

1st Prize: IM Colin Crouch 4½/5
IM Roland Berzinsh
GM Mark Hebden

Women's Prize: WFM Jessie Gilbert 3/5

Grading Prizes

Under-2200: Justin Horton 3½/5
James Mansson
Alan Walton

Under-2000: Paul Lam 3½/5

Under-1600: Clive Pemberton 3/5

Junior Prizes (under-18)

Boys: FM David Howell 3½/5

Girls: Selina Khoo 2/5
Amisha Parmar

Best Game Prize

FM Mark Lyell
Awarded for Lyell-Arkell, 1-0 (round 2)

British Championship Qualifier

Andrew Greet 4/5

NATIONAL JUNIOR SQUAD EVENT

APRIL 17/18 2004 NOTTINGHAM HIGH SCHOOL

This event saw several local junior players putting in good performances.

In the U8 section Ravi Patel of the Checkmate club was 1st with a score of 6.5/7, all the more remarkable when one takes into account that he is only 6yrs old. Oliver Williamson of Stapleford was 2nd with 6/7.

The U10 section saw 20 players compete, with another Midlands player in 1st place, with Peter Keetley of Stapleford scoring 6.5/7. Toby Thurgood of Nomads was 3rd; Hamzah Ali of Wollaton came 5th; Christopher Frost-Tesfaye and Alex Leverton, both of Nottingham, took 7th & 8th respectively. Keshav Nehra of Rushcliffe was 10th.

The U12 section had 70 players battling for honours. Top 10 places were secured by Kishan Lakhani of Stapleford 3rd; and Oliver Exton of Nomads 10th.

Order was restored in the U16 section with an MCCU area player securing 1st place out of 55 players, Dominic Rabbitte of Swinton scoring 5/6. A trio of Midlands youngsters took 9th, 10th & 11th

Continued on the next page

Continued from the previous page

places namely Simon Fowler of Coddon, Ankush Khandlewal of Nomads & Thomas Pym of Newport. Daniel wells of Newark, Richard Gover of 3C's, Michael Keetley of Stapleford and Dani Malik of Checkmates also finished in the top 20.

The Open Championship section saw Midlands players in the first 4 places. Michael Barnes of Oxclose taking top spot; Richard Westwood of St Marys Cannock was runner up; William Bennet of Oakham came 3rd; Christopher Dorrington of Spalding was 4th. In addition Tom Eckersley-Waite who attends Uppingham School in 5th and his brother Adam, who attends Oakham School in 8th, the Midlands can lay claim to 6 of top 8.

BOLTON EASTER CONGRESS

Open

Total Prize money £460

Name	Club/Town	Score	Grade
DB Lund	Preston	4.5/ 5	199
M Mitchell	Berwick	4	188
P Hutchinson	White Rose	3.5	189
D Latham	Chesterfield	3.5	173

Knights (u120)

Total Prize money £300

Name	Club/Town	Score	Grade
M Jalini	Manchester area	4.5 / 5	110
L Rabbitte	Swinton	4.5	83
M Carroll	Swinton	4	99
V Rushworth	Stockport	4	115

Major (u160)

Total Prize money £300

Name	Club/Town	Score	Grade
C Vassiliou	Chorlton	4 / 5	153
C Davies	Rose Forgrove	4	146
D Hartley (dis)	Amber Valley	4	137
R Atherton	Skelmersdale	4	125

British Blitz Championships, 23 March 2003

April 4th Brunel University

Place	Name	Loc	Title	Score
1	MCSHANE, LUKE	246	gm	14.5
2	ARKELL, KEITH	241	gm	13.5
3-5	TURNER, MATTHEW	228	gm	12
	MCNAB, COLIN	222	gm	12
	GWAZE, ROBERT	218	im	12
6-8	TRENT, LAWRENCE	177		11.5
	GHASI, A	224		11.5
	HASLINGER, STEWART	210		11.5
9-13	WELLS, PETER	232	gm	11
	BUCKLEY, SIMON	212		11
	KARAPCHANSKI, D	211	fm	11
	LUTTON, J. EZRA	157		11
	WALKER, M GRAHAM	198		11
14-17	HOUSKA, JOVANKA	186	wgm	10.5
	GORMALLY, DANIEL	248	im	10.5
	SHERWIN, JAMES	209	im	10.5
	FERGUSON, MARK	205		10.5
18-23	WILLIAMS, SIMON	222	im	10
	RENDLE, THOMAS	188		10
	STONE, ANDREW	201		10
	MUTER, DONNY	173		10
	DIGNAM, MATTHEW	173		10
	CROUCH, COLIN	238	im	10

These are the top scoring players in the event, which had over 100 competitors. For the full scores & cross tables visit www.britishblitz.co.uk

The History of Chess Notation

by Robert John McCrary

The number of books on chess is greater than the number of books on all other games combined. Yet, chess books would be few and far between if there were not an efficient way to record the moves of games. Chess notation is thus the special written "language" of chess players, making it possible for a single book to contain hundreds of games by great players, or thousands of opening variations.

Surprisingly, however, chess notation was slow to evolve. As late as the early nineteenth century, many chess books simply wrote out moves in full sentences! As a result, very few of those early games before the 1800's were recorded and preserved in print, and published analysis was correspondingly limited.

In Shakespeare's day, for example, the standard English chess book gave the move 2.Qf3 as follows: "Then the black king for his second draught brings forth his queene, and placest her in the third house, in front of his bishop's pawne." Can we imagine recording a full 40-move game with each move written out like that!

Nevertheless, the great 18th century player and author Andre Philidor, in his highly influential chess treatise published in 1747, continued to write out moves as full sentences. One move might read, "The bishop takes the bishop, checking." Or the move e5 would appear as "King's pawn to adverse 4th." Occasionally Philidor would abbreviate something, but generally he liked to spell everything out.

In 1737, however, a Syrian-born player/author named Philip Stamma introduced the shorthand notation that we now call "algebraic" in his book of composed problems, published in France. In 1745, he issued an expanded edition in English that included opening analysis and retained the algebraic notation. Stamma's system was almost identical to modern algebraic notation, with the files of the board designated "a-h" and the ranks numbered "1-8." However, he tried to make the notation completely international by using standard piece names as well as standard letters and numbers for

the squares. Thus, the king's rook was written as "H" instead of "R" throughout the game, because it began on the h-file; for similar reasons the king was always "E" and the queen "D," the queen's knight was "B," etc., with each piece being named for its starting file.

That system for piece symbols would have totally eliminated language differences across countries, but it failed and each country now uses its own piece symbols in algebraic notation although retaining standard names for the squares. Nevertheless, modern figurine algebraic (with printed piece symbols instead of names) is coming into use as a new way of reviving Stamma's old idea of a totally international notation.

Philidor and Stamma were rivals both as players and authors. Philidor soundly defeated Stamma in a match, after which Philidor's book became more popular than Stamma's book in England and his notation system therefore became dominant. However, Stamma's book also continued to enjoy popularity, and by the 19th century Stamma's simple system had become the norm in some European countries. Thus began the battle between descriptive and algebraic notations that continued into modern times.

Clearly, however, Philidor's way of recording moves had to be made more efficient if English chess literature were to have room to grow. A major innovation in that respect occurred in 1817, when an edition of Philidor's works introduced a system of abbreviations into Philidor's ponderous notation. Those abbreviations, by the way, were introduced rather timidly with suitable apologies to the reader. Over the next few decades, more use of abbreviations occurred, and the descriptive notation of modern times slowly took shape. As notation simplified, chess books were able to include more information, and the number of chess books began to increase exponentially.

Following is a sampling of ways of giving the move N-KB3 (Nf3 in algebraic) in descriptive notation, taken from books of different years to illustrate the slow evolution of that notation system. Notice the subtle changes that creep in virtually one letter at a

continued on the next page

continued from previous page

time; apparently too much change could not be tolerated all at once!

1614: The white king commands his own knight into the third house before his own bishop. 1750: K. knight to His Bishop's 3d. 1837: K.Kt. to B.third sq. 1848: K.Kt. to B's 3rd. 1859: K. Kt. to B. 3d. 1874: K Kt to B3 1889: KKt -B3 1904: Kt-KB3 1946: N-KB3

In the 1970's, The US Chess Federation began a campaign to convert the US to algebraic notation, which had by then become standard in nearly all countries. The arguments for the change were several: that US books would then enjoy a bigger international market; that algebraic was less ambiguous and therefore produced fewer irretrievable game scores; that algebraic took less space and more games could therefore fit into fewer pages.

In spite of these persuasive arguments, a fierce battle raged for years until algebraic gradually won out. Now descriptive is on the road to becoming an extinct "language" understood in the future only by historians. We now have books containing huge numbers of games, and computers that "speak" only algebraic.

We have come a long way from " the white King commands his own knight into the third house before His own Bishop" to the simple "Nf3," and chess literature has come a long way as well!

QUIZ – TEST YOUR KNOWLEDGE OF CHESS TERMINOLOGY

Q 1.What is another word for the term "Walking the Plank"?

Q 2.The opening move "Nc3" is called what?

Q 3.What is the term used for a piece that cannot avoid capture, but which moves to inflict the greatest possible damages to the opponent?

Q 4.When Double Checked, only the King can move. The space to which the King moves is called what?

Q 5.True or False: In a "Maiden's Game", pieces are captured faster than usual.

Q 6.A "Mysterious Rook Move" is primarily used to do what?

Q 7.What is a "Bare King"?

Q 8.If a player says "J'adoube", then they may do what?

Q 9.What term is used when a Pawn is promoted but does not become a Queen?

Q 10.Give the term for this situation: White moves Rook to b3 to avoid capture by Black's Rook, leaving their Pawn on a2 open to a capture by Black's Rook.

See Page 16/7 for the answers

CHESS CHAMPIONS

In the second of our series on chess World Champions we look at Wilhelm Steinitz.

Wilhelm Steinitz (1836 - 1900)



"...I cannot imagine anything that puts such a strain on all the vital organs - brain, heart, kidneys and liver - at once, as the excitement when playing chess..."

continued on next page

Wilhelm Steinitz, the first official world chess champion was born in Prague in 1836. Born to Jewish parents in Bohemia, Steinitz's initial passion was mathematics & he finished his polytechnic course in Vienna. Steinitz belonged to the Morphy era and was elder to him by one year. However, he seriously took to chess only after 1862 by which time Morphy had past his prime!

Steinitz was the first systematic thinker and opened the doors of scientific approach breaking the game into its elements and maintaining a thin thread of connectivity between the phases. At a time when it was considered the only honourable thing is to play for a win right from the start through violent attack on the opposite king, Steinitz firmly believed that one should look for such an attack only if he held an advantage. He was also the first one to emphasis on accumulation of small advantages. He said when a position is balanced; the relative strengths & weaknesses of both sides neutralized each other. The correct play by both sides would lead to a drawn result and when a player succeeds over the other, the ability to exploit one's strength simultaneously safeguarding his weakness surfaces.

Steinitz emphasized that one has to search for the combination & believed in its existence & seek to discover it. If one has searched in vain for 100 times- continue, possibly the advantage that you think you hold is only an illusion, your valuation may be at fault- prove them & improve them! But, search diligently, only such a work is rewarded.

The 'Austrian Morphy' as Steinitz was referred to, was a tremendous match player. His superb fighting qualities & superior ideas always propelled him to victory. After finishing second to Zukertort in the London tournament of 1883, Steinitz & Zukertort laid their claim for an official world championship, which finally took shape in 1886. Zukertort was a disciple of Andersson and one of the most profound players of that time (he had almost past his prime in 1886 and as the famous saying goes, " the first time he lost to Steinitz he was not yet the Zukertort, & the second time he lost - he was no longer the Zukertort!) and Steinitz himself claimed that the combination Zukertort played against Blackburn in London 1883 was one of the most noble combinations conceived over the chess board. In the match of 1886, Zukertort could not find any

dent in Steinitz structures and hence could not devise any combination and went down with the match score reading +10; -5; =5 in favour of Steinitz. According to Lasker it was the triumph of the greater thinker over the better player; deep strategist over brilliant talent!

Steinitz held his title till 1894 before losing it to the great psychologist Dr.Emmanuel Lasker. This fell as a great blow and depression set on Steinitz and he died as a pauper in New York on June 22, 1900.

Here is a trio of Steinitz games-

1. e4 e6 2. d4 d5 3. Nc3 Nf6 4. e5 Nfd7 5. f4 c5 6. dxc5

These days you find the move order 6.Nf3; 7:Be3 played more than 6.dc5 **6...Bxc5 7. Nf3 7... a6**

With this and his next move Steinitz intends to take control of the c4 and c5 squares. Had black foreseen the intentions of Steinitz, he would have played b4 on his next move. **12... Qb6 ? 13.**

17. Nd4 "The Square"!17... Nb8 18. O-O18... h5

Preferable is the normal 7....Nc6 combined with the typical 8...f6 brake**8.Bd3 Nc6 9. Qe2 9...**

Nb4 ?! Having played a6, black must now continue with 9..

.b5 instead of this waste move which fits in whites plan **10. Bd2 b5 11. Nd1**

Nxd3+ 12. cxd3 !Excellent and unheard of at the time when it was played. This underlines the Steinitz's grasp of positional play .

b4 Be7 14. a3 14... f5 ? Relinquishing what ever little play he could have generated with a latter f6... broke. From now on watch Steinitz play - the grip he maintains on the queen side squares and the conversion is a treat to watch- especially the knight's tour to a5! Black should have played 14...d4! and gained breathing space

at in compensation for the pawn.15. Rc1 Bb7 16. Be3 Qd8



Fearing g4 black weakens his position further, but already it is difficult to suggest anything good for black. He has already surrendered his trumps.

19. Nc3 ! There he goes!

19... Kf7 20. Nb1 g6 21. Nd2 Nd7 22. N2b3 Rc8 23. Na5 Final destination! Put right pieces in the right place and you don't have to find a plan - it flows!

23... Ba8 24. Rxc8 Qxc8 25. Rc1 Qb8 26. Qc2 Bd8 27. Nac6 Qb7 28. Nxd8+ Rxd8 29. Qc7 Qb8 30. Bf2 Threatens Bh4

30...Qb6 31. Nf3 Qxc7 32. Rxc7 Ke8 33. Ng5 Nf8 34. Bc5 Nd7 35. Bd6 Perfect strangulation - any move by black ends in a loss and the e6 pawn is hapless. Triumph of strategy!**1-0**

1. e4 e5 2. Nf3 Nc6 3. Bb5 a6 4. Ba4 Nf6 5. d3 d6 6. c3 6... Be7

Popular plan here is to deploy this bishop on g7. **7. h3 O-O 8. Qe2 8... Ne8 ?!**

Blacks intended f5 is thwarted by white's next move. Instead black should have continued with

8...Re8; followed by Bf8; g6 etc. **9. g4 b5 10. Bc2 Bb7 11. Nbd2 Qd7 12. Nf1 Nd8 13. Ne3 Ne6 14. Nf5 g6 15. Nxe7+ Qxe7 16. Be3 N8g7**



17. O-O-O White castles at a convenient time!

17... c5 18. d4 exd4 19. cxd4 19...c4 ?! After this black finds himself in an utter mess with none of his pieces doing anything significant. The yawning dark square weakness on the kingside decides his fate- a self destructive game by black.

20. d5 Nc7 21. Qd2 a5 22. Bd4 f6

23. Qh6 b4 24. g5 f5 25. Bf6 Qf7 26. exf5

gxf5 27. g6 27... Qxg6 Those days resignation was considered to be a dishonorable thing !

28. Bxg7Qxh6+ 29. Bxh6 Rf6 30. Rhg1+ Rg6

31. Bxf5 Kf7 32. Bxg6+ hxg6 33. Ng5+ Kg8

34. Rge1 1-0

1. e4 e5 2. Nf3 Nc6 3. Bb5 Nf6 4. d3 d6 5. c3

g6 6. Nbd2 Bg7 7. Nf1 O-O 8. Ba4 Prophylaxis

- unheard of in those days! Steinitz had come out with a definite plan for this game- an all-out king side attack. Before starting the same, he secures

his center with Nf1 and Ne3 and saves his white bishop for a prospective assault on the black king.

8... Nd7 9. Ne3 Nc5 10. Bc2 Ne6 11. h4!

Having done the preliminary work, Steinitz unleashes his intentions. A century later Kasparov employed a similar plan against Nigel Short in their PCA world championship match in London in 1993! Not without reasons they said that Steinitz was decades ahead of his time. **11... Ne7 ?**
11...h5 should have been played before the text move.

12. h5 d5 13. hxg6 13... fxg6?? Fatal mistake

14. exd5 Nxd5



20. Qf1 ! A wonderful move which straight away sets a mating pattern. For example if 20...Nd4??
 21.Rh7 Kh7; 22.Qh1 Bh6;23.Qh6 mates

20... a5 21. d4 exd4 22. Nxd4 Bxd4 23. Rxd4 ! 23... Nxd4?? Re7 is forced

24. Rxh7+ Kxh7 25. Qh1+ Kg7 26. Bh6+ Kf6

27. Qh4+ Ke5 28. Qxd4+ And white can chose between Qf4 or g4 mate!**1-0**

~~~~~  
 "Chess players are madmen of a certain quality, the way the artist is supposed to be, and isn't, in general." - Marcel Duchamp (1887-1968)  
 ~~~~~

QUIZ ANSWERS

Q 1. Zugzwang.

German in origin, the term "Zugzwang" is basically a situation where a player is forced to make a move that will weaken their position if not force them to make a costly sacrifice. Hence the less-common term "Walking the Plank".

Q 2. Dunst Opening

This aggressive opening is to move the Queen-side Knight forward and to the right. Players who open this way will often continue in the same pattern by moving their other Knight to f3. All the selections for this question are standard opening moves for the White Knight.

Q 3. Desperado.

An example of this would be a Rook that will be captured no matter what, but that moves in such a way that to capture it would mean leaving another piece vulnerable. By moving like this, it makes the opponent rethink the capture of that piece.

Q 4. Flight Square

Also called an "Escape Square". If there is no Flight Square available, then it is Checkmate. Double Check is where a King is simultaneously threatened by two pieces. An example of a Double Check is if a Rook moves to another square, putting the King in Check, but in turn opens a clear path for their Bishop to also place the King in Check.

Q 5. True

An optional rule, a "Maiden's Game" is where a piece must be captured if a capture is possible.

Q 6. Discourage the opponent from capturing a piece.

Coined by Nimzowitsch, a "Mysterious Rook Move" is where the player moves their Rook to a closed file so that the capture of a certain piece will "free" the Rook... something that most experienced players will try to avoid.

Q 7. A King that is the only piece of its color on the board.

When a King has been "Bared", then that person cannot win. The reason for this is that a King cannot move itself into Check, and therefore cannot capture the opponent's King. If the opponent's Queen has

been captured (and no Pawns are near promotion), a player with a "Bare King" can possibly (but with great difficulty) force a Stalemate by systematically wiping out all the opponent's pieces except for their King. If this happens, then it's called a "Swindle".

Q 8. Touch a piece without moving it.

"J'adoube", which is French for "I adjust", is an expression that means that you are touching a piece without intent to move it. Usually, this is used to center a piece on the square. If someone touches a piece without preceding it with this phrase, they are obligated to move it (or capture it, if it's an opponent's piece). If someone touches a piece and then does not move it, if they did not precede their action with this phrase, it is considered a "Takeback", which is very bad etiquette.

Q 9. Underpromotion.

This is a rare move, and usually only used to promote a Pawn to a Knight. Promoting a Pawn to a Bishop or Rook is generally a very unwise decision, as a Queen can move like a Bishop AND a Rook.

Q 10. Skewer

This can sometimes (but not always) be a Fork, which is where a piece threatens two pieces at the same time. Basically, a player moves a more valuable piece while allowing the opponent to capture a minor piece.

COUNTY MATCH REPORT

Winyates Barn –17.04.04 last game of the season for U125 Worcestershire team

A bit of a worrying start, Worcestershire were 4 boards shy, Essex also were waiting for their board 1 and 14 to turn up. Happily Worcestershire were able to field a full team all being 20minutes late

An hour was fast approaching and the non-playing Essex captain Mike Cresswell had to make the decision to take the vacant Board 1 player's place - and even though being out graded and playing with a time disadvantage, he managed to achieve a very commendable draw against the French Defence. It was a typical Captain's innings. Each Captain held

their team's fortune in their hands, both being last to finish –one on board 1 and the other on board 16. In the end it was all down to the last board. Sadly even if Giles Stanton had won we would have lost the match on board count (52:42) –the lower number winning - but a draw for the Essex Captain gave them a very close 8.5:7.5 win.

Most of the games played were very classical but two in particular took an unorthodox turn – a Humphrey Bogart special d4 Nf6 g4!? on board 9 – the Essex player said it was an old German game stating that Judit Polgar also plays a timely g4!?(any idea of its correct name?) and the Reverse Grob on board 3

The Essex Board 3 appeared stuck with how to handle the Reverse Grob –great to see Basman's games still can confound the unwary.

White Dave Hutchins 122 : Black John Gittus 121 -

1. Nf3 h6 2. g3 g5 3. d4 Bg7 4. Bg2 c5
5. c3 cxd 6. Nxd4 e6 7. Na3 Nc6 8. Na c2 Nf6
9. e4 d5 10. exd exd5 11. 0-0 0-0 12.Nxc6 bxc6
13. Nb4 Qc7 14. Be3 a5 15. Nd3 Bg4
16. f3 Bf5 17.Qd2 Rab8 18. Rf2 Rfe8
19. Ra f1 Qc8 20. Nc5 Nd7 21. g4 Bg6
22. f4 Nxc5 23. Bxc5 gxf4 24. Bd6 Rb7
25. Bxf4 Qxg4 26. Kh1 Kh7 27. Rg1 Qe6
28. Bf3 Be4 29. Rxg7+ Kxg7 30. Qd4 + Kh7
31. Rg2 Bg6 32. Bg4 Qe1+ 33. Rg1 Be4+

Resigned

POSITIONAL PROBLEMS

Solutions to the problems on page 6

No. 1 : 1. b6 Ka8/Kc8 2. Rd6 Kb8 3. Rd8 ++

No. 2 : 1. Rd8+ Kh7 2. Rh8 ++

No. 3 : 1. Bf8 Kh8 2. Kf6 Kh7 3. Kf7 Kh8
4. Bg7+ Kh7 5. Bf5++

No. 4 : 1. ... Bh3 2. Kg1 Qf3 3. Qe2/ any other
Move Qg2++

No. 5 : 1.Qxf6+ exf6 (if ...Kg8 then Nh6++)
2. Bxf6 Kg8 3. Nh6++

No. 6: 1. ... Ra3 2. Kb2 Ra2+ 3. Kb1 Raxc2(if
Kc3 then Raxc2+, Kd3, Be4++) 4. Bd2
Rexd2 5. Rb4 cxb4 6. g3 Bb3 (white has
no other moves) 7. g4 Rf1++

BCF COUNTY COMPETITION RESULTS SUPPLEMENT

MATCH - STAFFS v SUSSEX
SECTION - OPEN PRELIMINARY RD
DATE - 17 APRIL 2004

Bd	STAFFS	Grade	Score	Score	SUSSEX	Grade
1	L Cooper	210	0.5	0.5	D Graham	201
2	D Anderton	198	0.5	0.5	M Broom	201
3	J Blackburn	196	0.5	0.5	B Cafferty	195
4	D Wheeler	188	0	1	F Kwiatkowski	190
5	J Bellin	184	0.5	0.5	K Norman	188
6	P Wallace	182	0	1	C Linford	178
7	C Hibbard	177	0	1	G James	187
8	L Grinsell	176	1	0	S Newman	183
9	G Acey	176	0	1	C Jones	181
10	A Richardson	173	0.5	0.5	J Dodgson	180
11	J Mangwengwende	168	0	1	M Costley	178
12	M Calderar	E173	1	0	P Batchelor	177
13	M Armstrong	168	0	1	R Almond	174
14	A Crombleholme	167	0.5	0.5	B Donnelly	173
15	S Blackburn	159	0.5	0.5	M Stott	166
16	D Pritchard	158	0.5	0.5	A Pickersgill	157
TOTALS			6.0	10.0		

MATCH - GTR MANCHESTER v ESSEX
SECTION - OPEN QUARTER-FINAL
DATE - 8 MAY 2004

Bd	GTR MAN	Grade	Score	Score	ESSEX	Grade	
1	L.Vanderlydon	-		1	0	David Sands	202
2	A. Juanouby	-	½	½		Li Wu	198
3	A. Smith	206	1	0	0	David Coleman	195
4	A. Ashton	202	½	½		Jon Manley	199
5	D. James	200	1	0	0	John Hodgson	198
6	D. Hulmes	191	0	1	0	Ezra Lutton	191
7	S. Pickles	-		1	0	David Guthrie	E182
8	A. Walton	182	1	0	0	William Stirling	181
9	P. Adams	180	1	0	0	Larry Marden	179
10	R. Beach	189	0	1	0	Jeff Goldberg	178
11	M. Surtees	183	1	0	0	Ivan Myall	174
12	L. Powell	174	1	0	0	John White	174
13	G. Burton	169	½	½		Jaco Nelson	173
14	H. Lamb	164	0	1	0	Paul Williamson	168
15	J. Wright	115	1	0	0	Mark Weighell	167
16	DEFAULT			0	1	David Millward	162
TOTALS			9.0	4.0			

MATCH - YORKS v WARKS
SECTION - OPEN QUARTER-FINAL
DATE - 9 MAY 2004

Bd	YORKS	Grade	Score	Score	WARKS	Grade
1	RICHARD TOZER	w/g	0.5	0.5	T Hymes (W)	205
2	PAUL TOWNSEND	198	1	0	N Thomas	203
3	PETER GAYSON	188	0.5	0.5	D Mason	200
4	JONATHAN NELSON	w/g	0.5	0.5	S Dighton	190
5	PAUL CUMBERS	186	1 def	0 def	R Taylor	185
6	JOS WOOLLEY	175	0.5	0.5	R James	181
7	JIM BURNETT	185	0.5	0.5	A Baruch	193
8	MIKE WALKER	183	1	0	C Shephard	180
9	PETER HEMPSON	172	1	0	K Escott	182
10	PHIL WATSON	178	1	0	A Lloyd	174
11	PETER SHAW	181	1	0	P Holt	182
12	JONATHAN ARNOTT	175	1	0	M Fletcher	161
13	PAUL BLACKMAN	172	1	0	B Wildig	169
14	IHOR LEWYK	159	1	0	H Emanuel	158
15	LEO KEELEY	163	1	0	M Addis	155
16	GARETH MITCHELL	150	0.5	0.5	E Goodwin	151
TOTALS			12.0	3.0		

MATCH - DERBY v BEDFORD
SECTION - MINOR PRELIMINARY RD
DATE - 8 MAY 2004

Bd	DERBY	Grade	Score	Score	BEDFORD	Grade
1	Mike Alcock	187	0	1	Dave Ledger (W)	206
2	David Latham	172	0	1	Gary Kenworthy	206
3	Simon Gilmore	169	0	1	Steve Ledger	192
4	Michael Johnson	156	0.5	0.5	Michael MacDonald-R	190
5	Derek Jarvis	148	1	0	Richard Freeman	184
6	Trevor Bould	156	0.5	0.5	Milton Ioannides	184
7	David Williams	153	0	1	Alan Brown	176
8	Paul Moore	153	0.5	0.5	Peter Constantinou	151
9	Trevor Brown	145	1	0	Paul Kendall	168
10	John Hoddy	148	1	0	Branko Pribanich	167
11	Ron Farley	140	0	1	Adrian Elwin	167
12	Janos Wagenbach	138	0.5	0.5	Richard Mahony	166
13	Maurice Hill	129	0	1	Kevin Williamson	162
14	Vaughan Smith	125	0	1	Paul Habershon	159
15	A. McIntosh	111	0	1	Pete Clarke	158
16	Mark Carter	125	0	1	Kevin Mynett	159
TOTALS			5.0	11.0		

MATCH - NORFOLK v LINCS
SECTION - MINOR QUARTER-FINAL
DATE - 8 MAY 2004

Bd	NORFOLK	Grade	Score	Score	LINCS	Grade
1	Mark Gough (W)	201	1	0	Nigel Birwistle	175
2	Roderick Calindas	199	1	0	Peter Levermore	164
3	Steve Orton	190	1	0	Francis Bowers	162
4	David LeMoir	188	1	0	Keith Palmer	161
5	Ken McEwan	187	1	0	Kevin Shutt	159
6	John Wells	185	1	0	Denis Georgiou	150
7	Stephen Pullinger	166	1	0	Herman Kok	142
8	Roy Highes	161	1/2	1/2	Jan vanGemeran	142
9	Steven Moore	160	1/2	1/2	Dan Robinson	141
10	Martin Wollnough	155	0	1	Graham Ladds	139
11	Robert Wood	152	1/2	1/2	Ian McDonald	141
12	Trevor Ansell	147	1	0	Grenville Wollerton	135
13	Chris Russell	144	1	0	Geoff Collyer	130
14	Charlie Fry	143	0	1	Peter Sherlock	115
15	David Twitchell	135	1	0	Mark Stephens	110
16	Nick Gorvin	147	1	0	David Carew	138
TOTALS			12.5	3.5		

MATCH - DEVON v LEICS
SECTION - Under 175 QUARTER-FINAL
DATE - 15 MAY 2004

Bd	DEVON	Grade	Score	Score	LEICS	Grade
G Bolt	174	0.5	0.5		Edwards Alan	166
A W Brusey	171	1	0		Musson Robert	157
B R W Hewson	164	0.5	0.5		Clarke Paul	156
D Regis	163	0.5	0.5		Farrall David	153
I Jamieson	163e	0.5	0.5		Hardy Otto	134
P Brooks	159	1	0		Pattinson John	147
C Bellars	158	1	0		Jex Alan	146
T Thynne	162	0.5	0.5		Dawkins John	144
W Ingram	156	0.5	0.5		Dodds Iain	140
A Woodruff	154	1	0		Walker Guy	136
S Waters	153	0	1		Glover John	132
A Pinkerton	153	0.5	0.5		Rowlands Ben	98
B Gosling	149	0.5	0.5		Harrison Peter	126
I Annets	146	1	0		Wylie Steve	120
S Pope	140	1	0		Hewitt Sean	118
J Gordi	129	1	0		Denton Bruce	116
TOTALS			11.0	5.0		

MCCU COUNTY COMPETITION RESULTS SUPPLEMENT

MATCH - NOTTS v SUSSEX
SECTION - Under 175 QUARTER-FINAL
DATE - 8 MAY 2004

Bd	NOTTS	Grade	Score	Score	SUSSEX	Grade
1	P.J.Mercs	172	1/2	1/2	R.Almond	147
2	R.G.Truman	172	0	1	P.Farr	141
3	A.Cast	170	0	1	B.Donnely	140
4	J.Harrison	162	0	1	J.Mansson	142
5	A.J.Wright	160	1	0	M.Stott	137
6	B.Thompson	159	0	1	T.Spanton	137
7	T.D.Walker	159	1/2	1/2	R.Norinkeviciute	115
8	V.Naan	156	0	1	M.Reddie	136
9	G.J.Gibson (res)	105	1	0	S.Blewitt	126
10	D.A.Toms	147	1/2	1	A.Pickersgill	128
11	H.R.Edwards	142	1/2	1/2	N.Collacott	130
12	D.Amour	ung	1	0	R.Johnson	129
13	K.W.Roper	138	1/2	1/2	A.Palmer	128
14	J.Huthwaite	128	0	1	D.Barraclough	122
15	M.V.Taylor	120	0	1	A.Prescott	120
16	M.J.Harper	111	0	1	L.J.Cannon	109
TOTALS			5	11		

MATCH - Hampshire v. Greater Manchester
SECTION - Under 150
DATE - 24 January 2004

Bd	Greater Manchester	Grade	Score	Score	HAMPSHIRE	Grade
1	Dave Martindale	147	1	0	Nick Burton	146
2	David Bryan	140	0.5	0.5	Stuart Dean	144
3	Jon Lonsdale	140	0.5	0.5	Philip Barber	144
4	David Pardoe	142	0	1	David Thompson	143
5	Sasha Jovicic	140	0.5	0.5	Joe Coburn	142
6	Mick Norris	137	1	0	Chris Priest	141
7	Julian Clissold	136	0.5	0.5	Graham Stuart	138
8	Mike Crowther	133	1	0	Dave Elliott	135
9	Alan Beresford	128	0.5	0.5	Andrew Mills	134
10	Richard Glover	115	0	1	Peter Dallas	130
11	Chris Jardine	132	1	0	Harold Shelley	129
12	Steve Montgomery	123	1	0	Peter Donaldson	128
13	Mike Connor	130	1	0	Ivan Willis	126
14	David Keirman	128	0	1	Brian Grant	121
15	Peter Worsley	129	1	0	Steven Le Fevre	119
16	Malcolm Plant	115	1	0	Graham Head	94
TOTALS			10.5	5.5		

MATCH - SURREY v NOTTS
SECTION - Under 150 QUARTER-FINAL
DATE - 8 MAY 2004

Bd	NOTTS	Grade	Score	Score	SURREY	Grade
1	J.Cast	143	0	1	R.Reddin	148
2	B.M.Hayward	147	0.5	0.5	R.Amis	147
3	M.Ozanne	U/G	1	0	P.Archer	143
4	W.F.Ray	145	0.5	0.5	J.Nyman	142
5	D.Sudar	144	0	1	R.Harris	140
6	N.Graham	142	1	0	J.Song	138
7	J.Tassi	138	0	1.0	C.Penalba	141
8	D.Flynn	136	1	0	player defaulted	
9	R.P.Taylor	133	0	1	E.Brodie	140
10	G.J.Murfet	132	1	0	G.Goodwill	137
11	O.Lyne	132	1	0	R.Bell	139
12	Daniel Wells	107	0.5	0.5	R du Toit	136
13	A.S.Robinson	124	1	0	N.Harris	134
14	K.Lakhani	112	0.5	0.5	S.Wrigley	133
15	T.Severn	120	0.5	0.5	R.Piggott	131
16	B.L.Hobson	112	0	1	L.Evboomwan	137
TOTALS			8.5	7.5		

MATCH - WORCS v ESSEX
SECTION - Under 125 PRELIMINARY RD
DATE - 17 APRIL 2004

Bd	WORCS	Grade	Score	Score	ESSEX	Grade
1	Clive DENT	124	0.5	0.5	Mike CRESSWELL	113
2	Ian TRUSCOTT	121	0	1	Dave RAWLINGSL	122
3	John GITTUS	121	1	0	Dave HUTCHINGS	122
4	Tony SHAW	u/g	0.5	0.5	Mike BRADFORD	122
5	Bill WATSON	114	0.5	0.5	Graham WILLIS	119
6	Terrance POUNTNEY	111	0	1	Robert IANNETTA	117
7	Don CURRY	110	0.5	0.5	John FIGGINS	118
8	Kevin RYDER	110	1	0	S BURNS	116
9	Ian CLACK	107	0	1	Peter BRANDER	116
10	Ian ELLIS	108	0.5	0.5	John LAMBELL	115
11	John VARILONE	106	1	0	Peter FLINT	115
12	Bert FOORD	105	0	1	Terry FIELD	111
13	Peter BANKS	104	0	1	Nigel SHARP	e110
14	Tom PARKES	104	1	DEF	Andrew LILLIE	92j
15	Rusel SANDERS	102	0.5	0.5	Roger MUGGRIDGE	102
16	Giles STANTON	101	0.5	0.5	Dave LEWIS	97
TOTALS			7.5	8.5		

MATCH - SHROPSHIRE v YORKS
SECTION - Under 125 QUARTER-FINAL
DATE - 31 January 2004

Bd	Worcestershire	Grade	Score	Score	Shropshire	Grade
1	John Whittaker	124	1/2	1/2	Brian Foster	124
2	Gavin Cooper	124	1	0	Tom Wheldon	122
3	Norman O'Connor	122	1	0	Stuart Johnson	118
4	Richard Thompson	122	1	0	Owen Robinson	114
5	Graham Shepherd	121	1/2	1/2	Robert A South	114
6	Steve Tarr	120	1/2	1/2	David W Adam	109
7	Louis Graham	120	1/2	1/2	Arron Barker	109
8	Mark Billington	110	0	1	Neville R Pearce	107
9	Roger Brown	103	1/2	0	Nick Shakhevich	105
10	John Westhead	102	1/2	0	Steve Spencer	105
11	David Williams	98	1/2	1/2	Colin Cartlidge	103
12	H O'Harney	97	1	0	Fred Crighton	101
13	Eugene Raby	96	0	1	Jim Postill	98
14	Andy Jones	90	1/2	1/2	John Frankland	93
15	Martin Patterson	88	1/2	1/2	Stephen Burton	79
16	James Carless	E84	0	1	Mick Beavers	76
TOTALS			4.0	3.0		

MATCH - LANCS v LEICS
SECTION - Under 125 QUARTER-FINAL
DATE - 9 MAY 2004

Bd	Lancs	Grade	Score	Score	Leics	Grade
1	Collins, Anthony	123	1/2	1/2	Johnson, Cyril	117
2	Praeger, Harry	122	0	1	Wylie, Steve	120
3	White, Steven	121	1/2	1/2	Hewitt, Sean	118
4	Pennington Graham	121	1/2	1/2	Hadi, Justin	113
5	Howarth, Peter	121	1	0	Pourmozafari, Ben	100
6	Flaherty, Steve	117	1/2	1/2	Doidge, Charles	117
7	Goodridge, Vince	116	1/2	1/2	Marlow, Jack	u/g
8	Horam, Paul	116	0	1	Denton, Bruce	116
9	Fanning, Steve	115	1	0	Steel, Martin	115
10	Jones, Geoff	115	1	0	Toon, Jeffrey	115
11	Raynor, Philip	115	1	0	Smith, Stephen	115
12	Rushworth, Frank	112	1	0	Cresswell, Peter	114
13	McGrady, Blaine	112	0	1	Evans, P	111
14	Pennington, Geoff	111	1	0	Robinson, Anthony	106
15	Ashmore, Phil	109	0	1	Parr, Chris	u/g
16	Talbot, Mark	71	1	0	Adlard, Lee	111
TOTALS			7.0	4.0		

MCCU COUNTY COMPETITION RESULTS SUPPLEMENT

MATCH - ESSEX v SHROPS
SECTION - Under 100
DATE - 8 MAY 2004

Bd	ESSEX	Grade	Score	Score	Shropshire	Grade
1	V. Chaym	99	0.5	0.5	D. Williams	98
2	D. Maynard	97	0.5	0.5	T. Bosley	97
3	D. Lewis	97	0.5	0.5	E. Raby	96
4	A. Hayden	80e	0.5	0.5	A. Lewis	93
5	D. Haydon	80e	1	0	E. Whittingham	91
6	D. Hardy-Wallace	97	0.5	0.5	I. Davies	89
7	M. Crane	99	1	0	A. Pickles	84
8	M. Pool	95	1	0	D. Ogundipe	81
9	W. De Jong	89	0	1	S. Davies	80
10	R. Prickett	91	0.5	0.5	M. Patterson	80
11	K. Murray	78	0	1	P. Broderick	77
12	L. Whittaker	88	0.5	0.5	J. Jordan	75
13						
14						
15						
16						
	TOTALS		6.5	5.5		

MATCH - Nottinghamshire v. Leicestershire
SECTION - Under 100 QUARTER-FINAL
DATE - 8 MAY 2004

Bd	Nottinghamshire	Grade	Score	Score	Shropshire	Grade
1	D. Griffiths	95	1	0	R King	94
2	P. Allen	95	0	1	L Turner	ug
3	D. Dunne	91	0.5	0.5	D Moore	96
4	R. Dawson	93	1	0	R Smith	97
5	I. Fillingham	94	0	1	D Ward	ug
6	D. Cronshaw	93	0.5	0.5	M Thornton	94
7	L. Darby	88	1	0	R Stone	91
8	E. Fredericks	88	1	0	T Clay	89
9	D. Blampied	66	0.5	0.5	G Winterton	90
10	J. Lawrence	u/g	0.5	0.5	M Adams	ug
11	K. Heath	72	1	0	S Parsons	ug
12	R. Watson	63	0	1	J Creasey	73
13						
14						
15						
16						
	TOTALS		7.0	5.0		

RESULTS SUMMARY & SEMI-FINALS

OPEN

Preliminary Round
 Staffordshire 6 Sussex 10
 Quarter Finals
 G Manchester 10 ½ Essex 5 ½ : Yorks 13 Warwicks 3: Somerset 3½ Sussex 12 ½ : Kent bt Lancs 8-8
 Semi-Finals
 G Manchester v Sussex: Yorks v Kent.

MINOR

Quarter Finals
 Wiltshire 8 bt Surrey 8: Derbyshire 5 Bedford 11 Norfolk 12 ½ Lincolnshire 3 ½ : Herts bt Gloucester concession
 Semi-Finals
 Bedford v Herts: Wilts v Norfolk

U175

Quarter Finals
 Essex has the bye: Devon 11 Leicestershire 5: Suffolk conceded to Lancashire: Notts 5 Sussex 11
 Semi-Finals
 Essex v Lancs: Devon v Sussex

U150

Preliminary Round
 Somerset 3 Lancs 13: Cambridge 9½ Middlesex 5½ (B)
 Quarter Finals
 Hants 5½ G Manchester 10½ : Yorkshire 7 ½ Cambridge 8 ½ : Norfolk 5 Lancs 11: Surrey 7 ½ Notts 8 ½
 Semi-Finals
 Notts v Cambridge: Manchester v Lancs

U125

Preliminary Round
 Worcestershire 7 ½ Essex 8 ½
 Quarter Finals
 Suffolk 6 ½ Middlesex 9½ : Shropshire 9 Yorks 7: Lancs 9 ½ Leicestershire 6 ½ : Devon 6 Essex 10
 Semi-Finals
 Middlesex v Lancs Shrops v Essex

U100

Quarter Finals
 Somerset conceded to Lancs: Notts 7 Leicestershire 5: Essex 6 ½ Shrops 5 ½ : Norfolk 6½ v Surrey 5½
 Semi-Finals
 Lancs v Essex: Notts v Norfolk